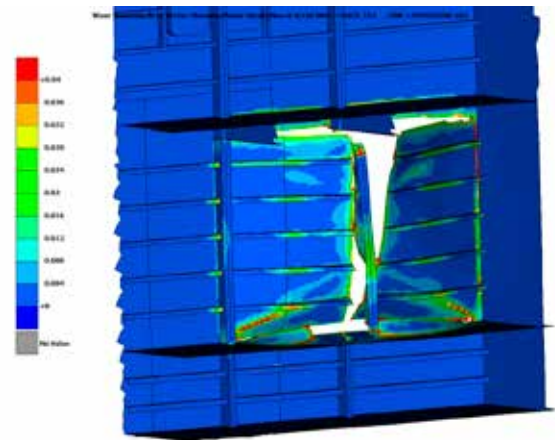
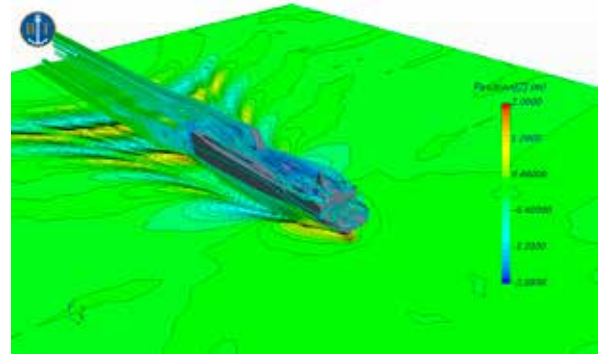


BASSOE TECHNOLOGY



MARINE AND OFFSHORE ENGINEERING
A FULL RANGE OF ENGINEERING SERVICES





DIRECT ACCESS TO HIGHLY SKILLED MARINE ENGINEERS

The highly skilled marine engineers at Bassoe Technology offer a fully comprehensive range of marine and offshore engineering services. For our customers, located all over the world, we are a flexible and reliable business partner with the resources and expertise to complete specialized tasks on very short notice. Our engineers have core competence within general naval architecture, structural, drilling, machinery, utility and electrical systems.

Bassoe Technology offers engineering services in every part of the offshore project, from the smallest service job to large and complex projects. We work in-house, on site and offshore, for customers within oil and gas and renewable energy.

Working with Bassoe Technology means quick and smooth access to a highly skilled and customer committed offshore engineering team.

Bassoe Technology is a recognized designer of advanced mobile offshore units such as semi-submersibles and drillships, offering concept and basic design, FEED and engineering services.

Bassoe Technology has developed an extensive design portfolio of technically optimized and purpose designed units and vessels for tender drilling, well intervention, drilling, accommodation, floating production and offshore wind, wave and current energy.

EXAMPLES OF SERVICES

General

General Arrangement changes and updates
Conversions
Project management
Site team management

Hydrodynamics

Motion analysis
Airgap analysis in accordance with DNVGL-OTG-13
Mooring design and analysis
Dynamic positioning analysis
Unit operability analysis
Model test evaluation and support
Dry tow analysis and review
Horizontal wave impact analysis
Hull optimization with CFD
General CFD analysis
Riser analysis

System Design

Machinery & Utility, Piping, EI & I, Drilling
System specification/review/inspection
System concept/re-design
FAT/SAT supervision
Commissioning manuals/reviews
Commissioning management
System upgrades: SCR, BOP handling, etc.
Risk analysis

Stability & Weight

Inclination test and weight survey
Update of stability documentation
Stability analysis/assessment (incl. Solas and Stockholm Agreement compliance)
VDL upgrade: added modules or capacity
Sizing/design of sponsoons/blisters/stability columns
Lifeboat launching study
Crane operations simulation
Stability operation manual

Structural

Structural analysis: global and local
Verification of structural integrity
Lifetime extension
Damage inspection and repair
Design of sponsons/blisters/stability columns
Document/drawing review
Wave impact analysis in accordance with DNVGL-OTG-14
AVEVA MARINE support

Feasibility/Concept Studies

Field study
Concept study: Semi-submersible, Barge, Jackup, FPSO etc.
Screening study

Noise & Vibration

Dynamic analysis
Noise prediction
Measurement

SOFTWARE

General

AutoCAD
Rhinoceros
3ds Max
MATLAB

Structural

DNV GL SESAM
PDMS
AVEVA MARINE
Nauticus Hull
LS-DYNA
ANSA
META

Hydrodynamic

DNV GL SESAM
Wamit
OrcaFlex
STAR-CCM+

Hydrostatic

Autoship
Autohydro
ShipWeight

HVAC, Piping and Electrical Design

MagiCAD together with AutoCAD
PIPENET



A LEADING DESIGNER OF ADVANCED MOBILE OFFSHORE UNITS

Some of our customers



Bassoe Technology AB

Visiting address: Östra Hamngatan 17, Gothenburg, Sweden

Postal address: PO Box 11130, SE-404 23 Gothenburg, Sweden

Tel: +46 31 855 800 Email: mail@basstech.se

www.basstech.se

Bassoe Technology is an independent designer of advanced mobile offshore units. Since 2013 owned by CIMC Offshore, with the largest semi-submersible drilling rig manufacturing center in China – Yantai CIMC Raffles Shipyard.

